

Woodlands



Grasslands



Wetlands



Woodland animals

Hazel dormouse

(*Muscardinus avellanarius*)



Photo from iNaturalist user Francesco Cecere.

Eats nuts, fruit and seeds, especially hazel nuts.

Blackcap

(*Sylvia atricapilla*)



Photo from iNaturalist user Victor Heng.

Eats insects, spiders, seeds and fruit.

Goldcrest

(*Regulus regulus*)



Photo from iNaturalist by user tcager.

Eats spiders and small insects in trees and between pine needles.

18-spotted ladybird

(*Myrrha octodecimguttata*)



Photo from iNaturalist user Victor Heng.

Eats aphids that eat from pine trees.

Grassland animals

Striped snail

(*Ceriuella virgata*)



Photo from iNaturalist user Ben Mapp.

Eats grass and dead plants.

Sheep

(*Ovis aries*)



Photo from iNaturalist user Victor Heng.

Eats grass and other plants.

Meadow pipit

(*Anthus pratensis*)



Photo from iNaturalist user Margit Kildevang.

Eats small insects and other invertebrates on the ground.

Gatekeeper butterfly

(*Pyronia tithonus*)



Photo from iNaturalist user Victor Heng.

Caterpillars eat grasses. Adults drink from flowers.

Wetland animals

Common blue damselfly (*Enallagma cyathigerum*)



Photo from iNaturalist user Victor Heng.

Young nymphs eat underwater invertebrates. Adults eat flying insects.

Ramshorn snail (*Planorbarius corneus*)



Photo from iNaturalist user Victor Heng

Eats water plants and algae.

Mallard duck (*Anas platyrhynchos*)



Photo from iNaturalist by user Victor Heng.

Eats water plants, snails, seeds.

Common frog (*Rana temporaria*)

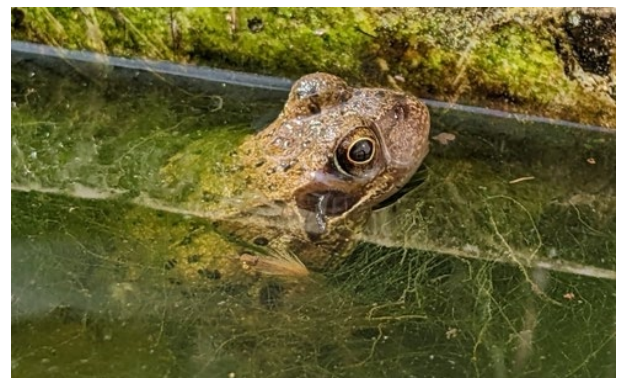


Photo from iNaturalist user Victor Heng.

Tadpoles eat plants and algae. Adults eat flies and other invertebrates.